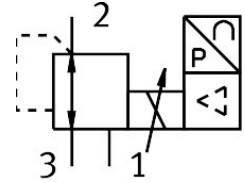


Proportional-pressure regulator MPPES-3-1/8-2-010

FESTO

Part number: 187350



 General operating condition

Data sheet

| Feature | Value |
|--|--|
| Nominal size, supply | 3 mm |
| Nominal size, exhaust | 2 mm |
| Type of actuation | Electric |
| Sealing principle | Soft |
| Mounting position | optional |
| Design | Directly actuated piston regulator |
| Short circuit current rating | For all electrical connections |
| Safety instructions | Safety position MPPES: if the power supply cable is interrupted, the output pressure drops to 0 bar. |
| Symbol | 00995305 |
| Reverse polarity protection | For all electrical connections |
| Valve function | 3-way proportional-pressure regulator, closed |
| Operating pressure | ≤0.4 MPa |
| Operating pressure | ≤4 bar |
| Pressure regulation range | 0 MPa ... 0.2 MPa |
| Pressure regulation range | 0 bar ... 2 bar |
| Inlet pressure 1 | 3 bar ... 4 bar |
| Inlet pressure 1 | 0.3 MPa ... 0.4 MPa |
| Max. pressure hysteresis | 0.001 MPa |
| Max. pressure hysteresis | 0.01 bar |
| Switching time off | 410 ms |
| Switching time on | 220 ms |
| Operational voltage range DC | 18 V ... 30 V |
| Nominal operating voltage DC | 24 V |
| Residual ripple | 10 % |
| SETPOINT/ACTUAL values | Voltage type 0 - 10 V |
| Operating medium | Compressed air to ISO 8573-1:2010 [7:4:4] Inert gases |
| Note on operating and pilot medium | Lubricated operation possible (in which case lubricated operation will always be required) |
| Approval | RCM trademark |
| KC mark | KC-EMV |
| CE mark (see declaration of conformity) | To EU EMC Directive In accordance with EU RoHS Directive |
| UKCA marking (see declaration of conformity) | To UK instructions for EMC To UK RoHS instructions |

| Feature | Value |
|--------------------------------|--|
| Corrosion resistance class CRC | 2 - Moderate corrosion stress |
| LABS (PWIS) conformity | VDMA24364-B2-L |
| Media temperature | 0 °C ... 60 °C |
| Degree of protection | IP65 |
| Ambient temperature | 0 °C ... 50 °C |
| Product weight | 915 g |
| Electrical connection | 8-pin M16x0.75 Plugs To DIN 45326 Round design |
| Type of mounting | With through-hole |
| Pneumatic connection, port 1 | G1/8 |
| Pneumatic connection, port 2 | G1/8 |
| Pneumatic connection, port 3 | G1/8 |
| Note on materials | RoHS-compliant |
| Material housing | Wrought aluminium alloy |
| Material membrane | NBR |