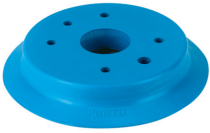


# Suction cup without connector ESV-100-SU

Part number: 191008

FESTO



 [General operating condition](#)

## Data sheet

Feature	Value
Min. workpiece radius	460 mm
Suction cup diameter	100 mm
Suction cup volume	29.779 cm <sup>3</sup>
Position of connection	Top
Mounting position	optional
Symbol	00991485
Suction cup shape	Round, flat
Operating pressure	-0.095 MPa ... 0 MPa
Operating pressure	-0.95 bar ... 0 bar
Operating pressure	-13.775 psi ... 0 psi
Nominal operating pressure	-0.07 MPa
Nominal operating pressure	-0.7 bar
Nominal operating pressure	-10.15 psi
Operating medium	Atmospheric air based on ISO 8573-1:2010 [7::-]
LABS (PWIS) conformity	VDMA24364 zone III
Suitable for use with food	See supplementary material information
Ambient temperature	-20 °C ... 60 °C
Holding force at nominal operating pressure	503.6 N
Product weight	59 g
Colour	Blue
Shore hardness	60 +/- 5
Note on materials	RoHS-compliant
Material suction cup	PUR