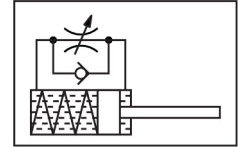


# Shock absorber YSRW-16-26

Part number: 191197

FESTO



 General operating condition

## Data sheet

Feature	Value
Size	16
Stroke	26 mm
Cushioning	Self-adjusting Soft characteristic curve
Mounting position	optional
Position detection	Without
Symbol	00991495
Max. impact speed	3 m/s
Reset time at room temperature	0.3 s
Reset time at min. ambient temperature	1 s
Mode of operation	Pushing Single-acting
Corrosion resistance class CRC	2 - Moderate corrosion stress
LABS (PWIS) conformity	VDMA24364-B2-L
Ambient temperature	-10 °C ... 80 °C
Cushioning length	26 mm
Max. stop force	2000 N
Max. energy consumption per stroke	35 J
Max. energy consumption per hour	68000 J
Max. residual energy	0.16 J
Reset force	6 N
Min. insertion force	60 N
Product weight	190 g
Load range	50 kg
Type of mounting	Via lock nut
Note on materials	RoHS-compliant
Material seals	NBR
Material housing	Galvanised steel
Material piston rod	High-alloy steel