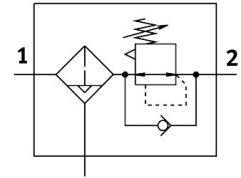


Filter regulator LFR-1/2-D-O-DI-MAXI-A

Part number: 192387

FESTO



General operating condition

Data sheet

Feature	Value
Size	Maxi
Series	D
Actuator lock	Rotary knob with detent
Mounting position	Vertical +/-5°
Grade of filtration	40 µm
Condensate drain	Fully automatic
Design	Filter regulator without pressure gauge
Max. condensate volume	43 ml
Bowl guard	Metal bowl guard
Symbol	00991588
Pressure gauge (ANALOG) or Pressure display (DIGITAL)	Prepared for G1/4
Operating pressure	0.2 MPa ... 1.2 MPa
Operating pressure	2 bar ... 12 bar
Pressure regulation range	0.5 bar ... 12 bar
Max. pressure hysteresis	0.04 MPa
Max. pressure hysteresis	0.4 bar
Max. pressure hysteresis	5.8 psi
Standard nominal flow rate (standardised to DIN 1343)	4500 l/min
Operating medium	Compressed air to ISO 8573-1:2010 [7:9:-] Inert gases
Corrosion resistance class CRC	2 - Moderate corrosion stress
LABS (PWIS) conformity	VDMA24364-B1/B2-L
Storage temperature	-10 °C ... 60 °C
Air purity class at output	Compressed air to ISO 8573-1:2010 [7:8:4] Inert gases
Media temperature	5 °C ... 60 °C
Ambient temperature	5 °C ... 60 °C
Product weight	1600 g
Type of mounting	In-line installation
Pneumatic connection, port 1	G1/2
Pneumatic connection, port 2	G1/2
Note on materials	RoHS-compliant
Material housing	Die-cast zinc
Material bowl	PC