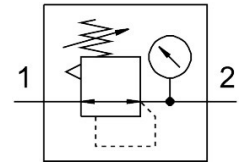


# Pressure regulator LRS-3/8-D-MIDI

Part number: 194634

FESTO



 General operating condition

## Data sheet

| Feature   | Value  |
|---|--|
| Size  | Midi   |
| Series  | D  |
| Actuator lock   | Rotary knob with integrated lock   |
| Mounting position                                     | optional   |
| Design  | Directly actuated diaphragm regulator  |
| Controller function                                   | Output pressure constant<br>Via primary pressure compensation<br>With secondary venting    |
| Symbol  | 00991538   |
| Pressure gauge (ANALOG) or Pressure display (DIGITAL) | With pressure gauge  |
| Operating pressure                                    | 0 MPa ... 1.6 MPa  |
| Operating pressure                                    | 0 bar ... 16 bar   |
| Pressure regulation range                             | 0.5 bar ... 12 bar   |
| Max. pressure hysteresis                              | 0.02 MPa   |
| Max. pressure hysteresis                              | 0.2 bar  |
| Max. pressure hysteresis                              | 2.9 psi  |
| Standard nominal flow rate (standardised to DIN 1343) | 3200 l/min   |
| Operating medium                                      | Compressed air to ISO 8573-1:2010 [7:4:4]<br>Inert gases                                   |
| Note on operating and pilot medium                    | Lubricated operation possible (in which case lubricated operation will always be required) |
| Corrosion resistance class CRC                        | 2 - Moderate corrosion stress  |
| LABS (PWIS) conformity                                | VDMA24364-B1/B2-L  |
| Air purity class at output                            | Compressed air to ISO 8573-1:2010 [7:4:4]<br>Inert gases                                   |
| Media temperature                                     | -10 °C ... 60 °C   |
| Ambient temperature                                   | -10 °C ... 60 °C   |
| Product weight  | 1250 g   |
| Type of mounting                                      | Front panel mounting<br>In-line installation<br>With accessories                           |
| Pneumatic connection, port 1                          | G3/8   |
| Pneumatic connection, port 2                          | G3/8   |
| Note on materials                                     | RoHS-compliant   |
| Material sub-base                                     | Die-cast zinc  |
| Material seals  | NBR  |
| Material housing                                      | Die-cast zinc  |