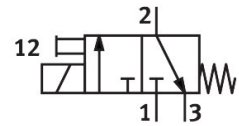


Solenoid valve MHP2-M1H-3/2G-M5

Part number: 196122

FESTO



[General operating condition](#)

Data sheet

Feature	Value
Valve function	3/2-way, closed, monostable
Type of actuation	Electric
Construction width	10 mm
Standard nominal flow rate (standardised to DIN 1343)	100 l/min
pneumatic working port	M5
Operating voltage	24V DC
Operating pressure	-0.09 MPa ... 0.8 MPa
Operating pressure	-0.9 bar ... 8 bar
Operating pressure	-13.05 psi ... 116 psi
Design	Pressure-relieved poppet valve
Type of reset	Mechanical spring
Degree of protection	IP65
Approval	c UL us - Recognized (OL)
Nominal size	2 mm
Grid dimension	14 mm
Note on grid dimension	Minimum distance between the valves is 4 mm
Exhaust-air function	With flow control option
Sealing principle	Soft
Mounting position	optional
Manual override	Non-detenting
Type of piloting	Direct
Flow direction	Reversible with restrictions
Symbol	00991308
lap	Underlap
Operating pressure, reversible	-0.09 MPa ... 0.1 MPa
Operating pressure, reversible	-0.9 bar ... 1 bar
Operating pressure, reversible	-13.05 psi ... 14.5 psi
Max. switching frequency	130 Hz
Switching time off	3.5 ms
Switching time on	7 ms
Duty cycle	100%
Characteristic coil data	24 V DC: 2.88 W
Permissible voltage fluctuations	+/- 10 %
Operating medium	Compressed air to ISO 8573-1:2010 [7:4:4]
Note on operating and pilot medium	Lubricated operation possible (in which case lubricated operation will always be required)

Feature	Value
Vibration resistance	Transport application test with severity level 2 to FN 942017-4 and EN 60068-2-6
Shock resistance	Shock test with severity level 2 to FN 942017-5 and EN 60068-2-27
Corrosion resistance class CRC	2 - Moderate corrosion stress
LABS (PWIS) conformity	VDMA24364-B1/B2-L
Cleanroom class	Class 6 according to ISO 14644-1
Media temperature	-5 °C ... 40 °C
Ambient temperature	-5 °C ... 40 °C
Product weight	60 g
Electrical connection	2-pin Plugs
Type of mounting	On PR rail
Pneumatic connection, port 1	Sub-base
Pneumatic connection, port 2	M5
Pneumatic connection, port 3	Sub-base
Note on materials	RoHS-compliant
Material seals	HNBR NBR
Material housing	Die-cast zinc, coated
Material screws	Galvanised steel