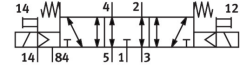


Solenoid valve CDVI5.0-MT2H-5/3ES

Part number: 196653

FESTO



[General operating condition](#)

Data sheet

| Feature | Value |
|---|--|
| Valve function | 5/3 exhausted |
| Type of actuation | Electric |
| Standard nominal flow rate (standardised to DIN 1343) | 400 l/min |
| pneumatic working port | Sub-base |
| Operating voltage | 24V DC |
| Operating pressure | -0.9 bar ... 10 bar |
| Design | Piston gate valve |
| Type of reset | Mechanical spring |
| Nominal size | 5 mm |
| Exhaust-air function | With flow control option |
| Sealing principle | Soft |
| Manual override | Non-detenting |
| Type of piloting | Pilot actuated |
| Pilot air supply | External |
| Flow direction | Reversible |
| Symbol | 00991127 |
| Note on forced dynamization | Switching frequency min. 1/month |
| Pilot pressure | 3 bar ... 8 bar |
| b value | 0.5 |
| C value | 1.54 l/sbar |
| Switching time off | 25 ms |
| Switching time on | 12 ms |
| Switching time reversal | 17 ms |
| Operating medium | Compressed air to ISO 8573-1:2010 [7:4:4] |
| Note on operating and pilot medium | Lubricated operation possible (in which case lubricated operation will always be required) |
| Corrosion resistance class CRC | 3 - high corrosion stress |
| LABS (PWIS) conformity | VDMA24364-B2-L |
| Media temperature | -5 °C ... 50 °C |
| Ambient temperature | -5 °C ... 50 °C |
| Product weight | 210 g |
| Type of mounting | Screw-in |
| Pilot exhaust port 82/84 | Sub-base |
| Pneumatic connection, port 1 | Sub-base |
| Pneumatic connection, port 2 | Sub-base |
| Pneumatic connection, port 3 | Sub-base |

| Feature | Value |
|------------------------------|--------------------|
| Pneumatic connection, port 4 | Sub-base |
| Pneumatic connection, port 5 | Sub-base |
| Note on materials | RoHS-compliant |
| Material seals | NBR TPE-O |
| Material housing | Die-cast aluminium |