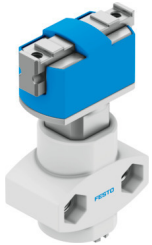


Parallel gripper HGPM-08-EO-G6

Part number: 197559

FESTO



 [General operating condition](#)

Data sheet

| Feature | Value |
|---|--|
| Size | 8 |
| Stroke per gripper jaws | 2 mm |
| Max. replacement accuracy | 0.2 mm |
| Max. angular gripper jaw backlash ax, ay | <0.5 deg |
| Max. gripper jaw backlash Sz | <0.03 mm |
| Repetition accuracy, gripper | ≤0.05 mm |
| Number of gripper jaws | 2 |
| Drive system | Pneumatic |
| Mode of operation | Single-acting Open |
| Gripper function | Parallel |
| Gripper force back-up | None |
| Design | Wedge-shaped drive |
| Position detection | Without |
| Symbol | 00991897 |
| Operating pressure | 4 bar ... 8 bar |
| Max. operating frequency of gripper | 4 Hz |
| Min. opening time at 0.6 MPa (6 bar, 87 psi) | 4.9 ms |
| Min. closing time at 0.6 MPa (6 bar, 87 psi) | 2.3 ms |
| Max. mass per external gripper finger | 5 g |
| Operating medium | Compressed air to ISO 8573-1:2010 [7:4:4] |
| Note on operating and pilot medium | Lubricated operation possible (in which case lubricated operation will always be required) |
| Corrosion resistance class CRC | 1 - Low corrosion stress |
| LABS (PWIS) conformity | VDMA24364-B2-L |
| Ambient temperature | 5 °C ... 60 °C |
| Spring force of stroke compensator | 4 N ... 6 N |
| Total gripping force, opening, 0.6MPa (6bar, 87 psi) | 16 N |
| Gripper force per gripper jaw, closing, 0.6 MPa (6 bar, 87 psi) | 8 N |
| Mass moment of inertia | 0.00922 kgcm ² |
| Max. force on gripper jaw Fz static | 10 N |
| Max. torque at gripper Mx static | 0.1 Nm |
| Max. torque at gripper My static | 0.1 Nm |
| Max. torque at gripper Mz static | 0.1 Nm |
| Product weight | 19 g |
| Type of mounting | With through-hole |

| Feature | Value |
|-----------------------|----------------------------------|
| Pneumatic connection | M3 |
| Note on materials | RoHS-compliant |
| Material cover cap | POM |
| Material housing | Anodised wrought aluminium alloy |
| Material gripper jaws | High-alloy steel |