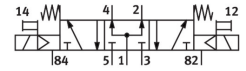
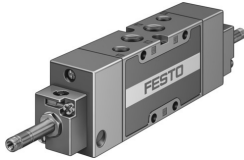


Solenoid valve MFH-5/3B-1/4-B

Part number: 19788

FESTO



[PDF](#) General operating condition

Data sheet

Feature	Value
Valve function	5/3-way, pressurised
Type of actuation	Electric
Construction width	32 mm
Standard nominal flow rate (standardised to DIN 1343)	1600 l/min
pneumatic working port	G1/4
Operating pressure	0.3 MPa ... 1 MPa
Operating pressure	3 bar ... 10 bar
Design	Piston gate valve
Type of reset	Mechanical spring
Nominal size	10 mm
Grid dimension	33 mm
Exhaust-air function	With flow control option
Sealing principle	Soft
Mounting position	optional
Manual override	Non-detenting
Type of piloting	Pilot actuated
Pilot air supply	Internal
Flow direction	Non-reversible
Symbol	00991034
lap	Overlap
b value	0.38
C value	6.35 l/sbar
Max. switching frequency	3 Hz
Switching time off	23 ms
Switching time on	22 ms
Switching time reversal	35 ms
Max. positive test pulse with 0 signal	2200 µs
Max. negative test pulse with 1 signal	3700 µs
Operating medium	Compressed air to ISO 8573-1:2010 [7:4:4]
Note on operating and pilot medium	Lubricated operation possible (in which case lubricated operation will always be required)
Corrosion resistance class CRC	1 - Low corrosion stress
LABS (PWIS) conformity	VDMA24364-B1/B2-L
Storage temperature	-40 °C ... 60 °C
Media temperature	-10 °C ... 60 °C
Ambient temperature	-5 °C ... 40 °C

Feature	Value
Product weight	500 g
Electrical connection	Via F coil, to be ordered separately
Type of mounting	Either: On PR rail With through-hole
Pilot exhaust port 82	M5
Pilot exhaust port 84	M5
Pilot air port 12	G1/8
Pilot air port 14	G1/8
Pneumatic connection, port 1	G1/4
Pneumatic connection, port 2	G1/4
Pneumatic connection, port 3	G1/4
Pneumatic connection, port 4	G1/4
Pneumatic connection, port 5	G1/4
Note on materials	RoHS-compliant
Material seals	NBR
Material housing	Die-cast aluminium