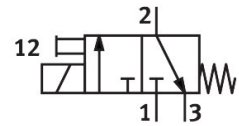
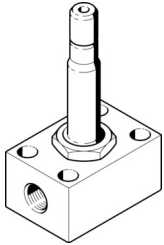


Solenoid valve MCH-3-1/8

Part number: 2199

FESTO



 [General operating condition](#)

Data sheet

Feature	Value
Valve function	3/2-way, closed, monostable
Type of actuation	Electric
Standard nominal flow rate (standardised to DIN 1343)	160 l/min
pneumatic working port	G1/8
Operating pressure	0 MPa ... 0.7 MPa
Operating pressure	0 bar ... 7 bar
Design	Poppet valve with spring return
Type of reset	Mechanical spring
Degree of protection	IP65
Nominal size	2.5 mm
Sealing principle	Soft
Manual override	Detenting
Type of piloting	Direct
Flow direction	Non-reversible
Symbol	00991308
Switching time off	13 ms
Switching time on	12 ms
Duty cycle	100%
Characteristic coil data	110 V AC: 50/60 Hz, pick-up power 30.0 VA, holding power 22.0 VA 110 V DC: 12.7 W 120 V AC: 60 Hz, pick-up power 30.0 VA, holding power 22.0 VA 12 V AC: 50 Hz, pick-up power 30.0 VA, holding power 22.0 VA 12 V DC: 11.7 W 220 V AC: 50/60 Hz, pick-up power 30.0 VA, holding power 22.0 VA 220 V DC: 15.0 W 240 V AC: 50 Hz, pick-up power 30.0 VA, holding power 22.0 VA 240 V DC: 17.9 W 24 V AC: 50 Hz, pick-up power 30.0 VA, holding power 22.0 VA 24 V DC: 11.0 W 380 V AC: 50/60 Hz, pick-up power 30.0 VA, holding power 22.0 VA 42 V AC: 50/60 Hz, pick-up power 30.0 VA, holding power 22.0 VA 42 V DC: 12.0 W 48 V AC: 50 Hz, pick-up power 30.0 VA, holding power 22.0 VA 96 V DC: 11.0 W
Operating medium	Compressed air to ISO 8573-1:2010 [7:4:4]
LABS (PWIS) conformity	VDMA24364-C1-L
Storage temperature	-40 °C ... 100 °C
Media temperature	-10 °C ... 60 °C
Ambient temperature	-5 °C ... 40 °C
Type of mounting	With through-hole

Feature	Value
Pneumatic connection, port 1	G1/8
Pneumatic connection, port 2	G1/8
Pneumatic connection, port 3	G1/8
Note on materials	RoHS-compliant