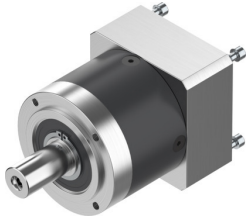


Gear unit EMGA-80-P-G5-EAS-80

Part number: 2297691

FESTO



 [General operating condition](#)

Data sheet

Feature	Value
Gear unit flange size	80 mm
Motor flange size	80 mm
Torsional backlash	0.12 deg
Type of gear unit	Planetary gear
Gear unit ratio	5:1
Max. drive speed	7000 rpm
Operating temperature of gear unit	-25 °C ... 90 °C
LABS (PWIS) conformity	VDMA24364-B2-L
Degree of protection	IP54
Continuous output torque	110 Nm
Mass moment of inertia of gear unit	0.45 kgcm ²
Max. output torque	176 Nm
Max. efficiency	98 %
Torsional rigidity	6 Nm/arcmin
Product weight	2000 g
Gear unit interface, output shaft	80G
Gear unit interface, drive shaft	80P
Note on materials	RoHS-compliant