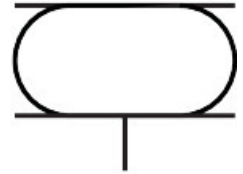


# Bellows cylinder EB-80-20

Part number: 2748903

FESTO



 General operating condition

## Data sheet

Feature	Value
Size	80
Required installation diameter	95 mm
Stroke	20 mm
Max. extended height	70 mm
Max. angle of inclination	10 deg
Max. offset	5 mm
Min. installation height	50 mm
Mode of operation	Single-acting
Symbol	00991205
Operating pressure	0 bar ... 8 bar
Operating medium	Compressed air to ISO 8573-1:2010 [-:::4]
Note on operating and pilot medium	Lubricated operation not possible
Corrosion resistance class CRC	0 - No corrosion stress
LABS (PWIS) conformity	VDMA24364-B1/B2-L
Ambient temperature	-40 °C ... 70 °C
Reset force	400 N
Product weight	500 g
Type of mounting	Via female thread
Pneumatic connection	G1/4
Note on materials	RoHS-compliant
Material bellows	CR
Material housing	Die-cast aluminium