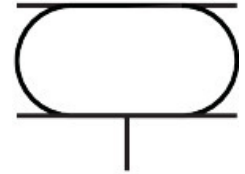


# Bellows cylinder EB-80-45

Part number: 2748904

FESTO



 [General operating condition](#)

## Data sheet

Feature	Value
Size	80
Required installation diameter	95 mm
Stroke	45 mm
Max. extended height	110 mm
Max. angle of inclination	15 deg
Max. offset	10 mm
Min. installation height	65 mm
Mode of operation	Single-acting
Symbol	00991205
Operating pressure	0 bar ... 8 bar
Operating medium	Compressed air to ISO 8573-1:2010 [-:::4]
Note on operating and pilot medium	Lubricated operation not possible
Corrosion resistance class CRC	0 - No corrosion stress
LABS (PWIS) conformity	VDMA24364-B1/B2-L
Ambient temperature	-40 °C ... 70 °C
Reset force	200 N
Product weight	500 g
Type of mounting	Via female thread
Pneumatic connection	G1/4
Note on materials	RoHS-compliant
Material bellows	CR
Material housing	Die-cast aluminium