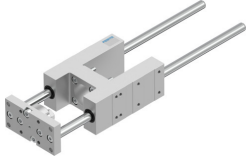


# Guide unit EAGF-V2-KF-32-200

Part number: 2782818

FESTO



 [General operating condition](#)

## Data sheet

Feature	Value
Size	32
Stroke	200 mm
Reversing backlash theoretical	0 µm
Mounting position	optional
Guide	Recirculating ball bearing guide
Design	Guidance
Corrosion resistance class CRC	0 - No corrosion stress
LABS (PWIS) conformity	VDMA24364-B2-L
Ambient temperature	-20 °C ... 80 °C
Max. force F <sub>y</sub>	750 N
Max. force F <sub>y</sub> static	1020 N
Max. force F <sub>z</sub>	750 N
Max. force F <sub>z</sub> static	1020 N
Max. moment M <sub>x</sub>	28 Nm
Max. torque M <sub>x</sub> static	38 Nm
Max. moment M <sub>y</sub>	34 Nm
Max. torque M <sub>y</sub> static	46 Nm
Max. moment M <sub>z</sub>	34 Nm
Max. torque M <sub>z</sub> static	46 Nm
Displacement force	15 N
Moving mass	1084 g
Product weight	2045 g
Centre of gravity at 0 mm stroke	30 mm
Centre of gravity additional of moving mass per 10 mm	4.1 mm
Type of mounting	Via female thread
Note on materials	RoHS-compliant
Material guide component	Tempered steel
Material housing	Anodised
Material yoke plate	Steel