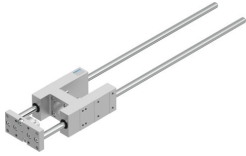


Guide unit EAGF-V2-KF-32-400

Part number: 2782923

FESTO



 [General operating condition](#)

Data sheet

Feature	Value
Size	32
Stroke	400 mm
Reversing backlash theoretical	0 µm
Mounting position	optional
Guide	Recirculating ball bearing guide
Design	Guidance
Corrosion resistance class CRC	0 - No corrosion stress
LABS (PWIS) conformity	VDMA24364-B2-L
Ambient temperature	-20 °C ... 80 °C
Max. force Fy	750 N
Max. force Fy static	1020 N
Max. force Fz	750 N
Max. force Fz static	1020 N
Max. moment Mx	28 Nm
Max. torque Mx static	38 Nm
Max. moment My	34 Nm
Max. torque My static	46 Nm
Max. moment Mz	34 Nm
Max. torque Mz static	46 Nm
Displacement force	15 N
Moving mass	1444 g
Product weight	2405 g
Centre of gravity at 0 mm stroke	30 mm
Centre of gravity additional of moving mass per 10 mm	4.1 mm
Type of mounting	Via female thread
Note on materials	RoHS-compliant
Material guide component	Tempered steel
Material housing	Anodised
Material yoke plate	Steel