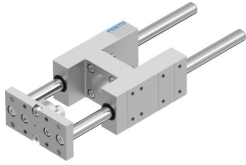


Guide unit EAGF-V2-KF-50-200

Part number: 2784152

FESTO



 General operating condition

Data sheet

Feature	Value
Size	50
Stroke	200 mm
Reversing backlash theoretical	0 µm
Mounting position	optional
Guide	Recirculating ball bearing guide
Design	Guidance
Corrosion resistance class CRC	0 - No corrosion stress
LABS (PWIS) conformity	VDMA24364-B2-L
Ambient temperature	-20 °C ... 80 °C
Max. force F _y	1260 N
Max. force F _y static	1600 N
Max. force F _z	1260 N
Max. force F _z static	1600 N
Max. moment M _x	65 Nm
Max. torque M _x static	83 Nm
Max. moment M _y	70 Nm
Max. torque M _y static	89 Nm
Max. moment M _z	70 Nm
Max. torque M _z static	89 Nm
Displacement force	15 N
Moving mass	1995 g
Product weight	5039 g
Centre of gravity at 0 mm stroke	46 mm
Centre of gravity additional of moving mass per 10 mm	4.3 mm
Type of mounting	Via female thread
Note on materials	RoHS-compliant
Material guide component	Tempered steel
Material housing	Anodised
Material yoke plate	Steel