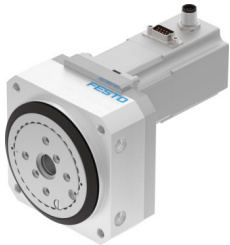


Rotary drive ERMO-32-ST-E

Part number: 3008528

FESTO



 [General operating condition](#)

Data sheet

Feature	Value
Size	32
Design	Electromechanical rotary drive With integrated gear unit
Mounting position	optional
Type of mounting	Via female thread
Rotation angle	Infinite
Gear unit ratio	7:1
Nominal torque	5 Nm
Nominal rotary speed	50 rpm
Max. speed at 90°	100 rpm
Impact energy in end positions	2.9E-4 J
Torsional backlash	0.2 deg
Repetition accuracy	±0.1 °
Max. axial force	450 N
Max. radial force	550 N
Permissible mass moment of inertia	0.0164 kgm ²
Product weight	2200 g
Stepper angle for complete step	1.8 deg
Stepping angle tolerance	±5%
Mass moment of inertia JO	0.39 kgcm ²
Duty cycle	100%
Nominal operating voltage DC	24 V
Operating voltage DC for brake	24 V
Power consumption, brake	8 W
Brake holding torque	2.5 Nm
Mass moment of inertia of brake	0.013 kgcm ²
Nominal motor current	4.2 A
Insulation protection class	B
Type of motor	Stepper motor
Rotor position sensor	Incremental encoder
Rotor position encoder interface	RS422 TTL AB channels + zero index
Rotor position sensor, encoder measuring principle	Optical
Electrical connector system	Plug
Approval	RCM trademark
CE mark (see declaration of conformity)	To EU EMC Directive In accordance with EU RoHS Directive

Feature	Value
UKCA marking (see declaration of conformity)	To UK instructions for EMC To UK RoHS instructions
Interface code, basis	E8-55
Degree of protection	IP40
Storage temperature	-20 °C ... 60 °C
Ambient temperature	0 °C ... 50 °C
Relative air humidity	0 - 85% Non-condensing
LABS (PWIS) conformity	VDMA24364 zone III
Note on materials	RoHS-compliant
Material flange	Wrought aluminium alloy Anodised
Material housing	Anodised