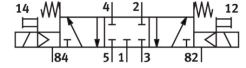


Solenoid valve MVH-5/3G-1/8-B

Part number: 30477

FESTO



 [General operating condition](#)

Data sheet

| Feature | Value |
|-------------------------------------------------------|--------------------------------------------------------------------------------------------|
| Valve function | 5/3 closed |
| Type of actuation | Electric |
| Construction width | 26 mm |
| Standard nominal flow rate (standardised to DIN 1343) | 1000 l/min |
| pneumatic working port | G1/8 |
| Operating voltage | 24V DC |
| Operating pressure | 0.3 MPa ... 1 MPa |
| Operating pressure | 3 bar ... 10 bar |
| Design | Piston gate valve |
| Type of reset | Mechanical spring |
| Nominal size | 8 mm |
| Grid dimension | 27 mm |
| Sealing principle | Soft |
| Mounting position | optional |
| Manual override | Non-detenting |
| Type of piloting | Pilot actuated |
| Pilot air supply | Internal |
| Flow direction | Non-reversible |
| Symbol | 00991033 |
| lap | Overlap |
| Max. switching frequency | 3 Hz |
| Switching time off | 32 ms |
| Switching time on | 28 ms |
| Switching time reversal | 32 ms |
| Max. positive test pulse with 0 signal | 2200 µs |
| Max. negative test pulse with 1 signal | 3700 µs |
| Characteristic coil data | 24 V DC: 2.5 W |
| Permissible voltage fluctuations | +/- 10 % |
| Operating medium | Compressed air to ISO 8573-1:2010 [7:4:4] |
| Note on operating and pilot medium | Lubricated operation possible (in which case lubricated operation will always be required) |
| Corrosion resistance class CRC | 1 - Low corrosion stress |
| LABS (PWIS) conformity | VDMA24364-B1/B2-L |
| Storage temperature | -40 °C ... 60 °C |
| Media temperature | -5 °C ... 50 °C |
| Ambient temperature | -5 °C ... 50 °C |

| Feature | Value |
|------------------------------|--------------------------------------------|
| Product weight | 575 g |
| Type of mounting | Either: On PR rail With through-hole |
| Pilot exhaust port 82 | M5 |
| Pilot exhaust port 84 | M5 |
| Pneumatic connection, port 1 | G1/8 |
| Pneumatic connection, port 2 | G1/8 |
| Pneumatic connection, port 3 | G1/8 |
| Pneumatic connection, port 4 | G1/8 |
| Pneumatic connection, port 5 | G1/8 |
| Note on materials | RoHS-compliant |
| Material seals | NBR |
| Material housing | Die-cast aluminium |