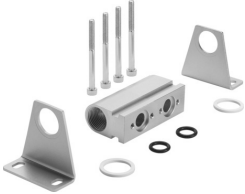


Common supply manifold PAL-1/8-2-B

Part number: 30552

FESTO



 [General operating condition](#)

Data sheet

| Feature | Value |
|--------------------------------|-----------------------|
| Mounting position | optional |
| Max. number of valve positions | 2 |
| LABS (PWIS) conformity | VDMA24364-B1/B2-L |
| Product weight | 150 g |
| Type of mounting | Via mounting bracket |
| Pneumatic connection, port 1 | G3/8 |
| Note on materials | RoHS-compliant |
| Material sub-base | Aluminium Anodised |