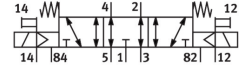


# Solenoid valve MVH-5/3E-1/8-S-B

Part number: 30998

FESTO



 [General operating condition](#)

## Data sheet

| Feature   | Value  |
|---|--|
| Valve function  | 5/3 exhausted  |
| Type of actuation                                     | Electric   |
| Construction width                                    | 26 mm  |
| Standard nominal flow rate (standardised to DIN 1343) | 1000 l/min   |
| pneumatic working port                                | G1/8   |
| Operating voltage                                     | 24V DC   |
| Operating pressure                                    | -0.09 MPa ... 1 MPa  |
| Operating pressure                                    | -0.9 bar ... 10 bar  |
| Design  | Piston gate valve  |
| Type of reset   | Mechanical spring  |
| Nominal size  | 8 mm   |
| Grid dimension  | 27 mm  |
| Sealing principle                                     | Soft   |
| Mounting position                                     | optional   |
| Manual override                                       | None   |
| Type of piloting                                      | Direct   |
| Pilot air supply                                      | External   |
| Flow direction  | Reversible   |
| Symbol  | 00991032   |
| lap   | Overlap  |
| Pilot pressure  | 0.3 MPa ... 1 MPa  |
| Pilot pressure  | 3 bar ... 10 bar   |
| Max. switching frequency                              | 3 Hz   |
| Switching time off                                    | 29 ms  |
| Switching time on                                     | 34 ms  |
| Max. positive test pulse with 0 signal                | 2200 µs  |
| Max. negative test pulse with 1 signal                | 3700 µs  |
| Characteristic coil data                              | 24 V DC: 2.5 W   |
| Permissible voltage fluctuations                      | +/- 10 %   |
| Operating medium                                      | Compressed air to ISO 8573-1:2010 [7:4:4]  |
| Note on operating and pilot medium                    | Lubricated operation possible (in which case lubricated operation will always be required) |
| Corrosion resistance class CRC                        | 1 - Low corrosion stress   |
| LABS (PWIS) conformity                                | VDMA24364-B1/B2-L  |
| Storage temperature                                   | -40 °C ... 60 °C   |
| Media temperature                                     | -5 °C ... 50 °C  |

| <b>Feature</b>               | <b>Value</b>                               |
|------------------------------|--|
| Pilot medium                 | Compressed air to ISO 8573-1:2010 [7:4:4]  |
| Ambient temperature          | -5 °C ... 50 °C                            |
| Product weight               | 575 g                                      |
| Type of mounting             | Either:<br>On PR rail<br>With through-hole |
| Auxiliary pilot air port 12  | G1/8                                       |
| Auxiliary pilot air port 14  | G1/8                                       |
| Pilot exhaust port 82        | M5   |
| Pilot exhaust port 84        | M5   |
| Pilot air port 12            | G1/8                                       |
| Pilot air port 14            | G1/8                                       |
| Pneumatic connection, port 1 | G1/8                                       |
| Pneumatic connection, port 2 | G1/8                                       |
| Pneumatic connection, port 3 | G1/8                                       |
| Pneumatic connection, port 4 | G1/8                                       |
| Pneumatic connection, port 5 | G1/8                                       |
| Note on materials            | RoHS-compliant                             |
| Material seals               | NBR  |
| Material housing             | Die-cast aluminium                         |