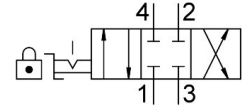


Hand lever valve VHER-P-H-B43C-G12

Part number: 3192074

FESTO



[PDF](#) General operating condition

Data sheet

Feature	Value
Valve function	4/3 closed
Type of actuation	Manual
Construction width	95 mm
Standard nominal flow rate (standardised to DIN 1343)	3200 l/min
pneumatic working port	G1/2
Operating pressure	0 bar ... 10 bar
Note on operating pressure	Vacuum operation at connection 3 only In the case of dual-pressure operation, the pressure at port 1 must be higher than at port 3.
Design	Rotary gate valve
Nominal size	12 mm
Exhaust-air function	With flow control option
Instructions on use	Actuate manually only
Actuator lock	can be closed with accessories
Sealing principle	Hard
Type of piloting	Direct
Flow direction	Non-reversible
Symbol	00995944
Overlap	yes
Switching position indicator	With accessories
Operating medium	Compressed air to ISO 8573-1:2010 [7:4:4]
Note on operating and pilot medium	Lubricated operation possible (in which case lubricated operation will always be required)
Corrosion resistance class CRC	2 - Moderate corrosion stress
LABS (PWIS) conformity	VDMA24364-B1/B2-L
Media temperature	-20 °C ... 80 °C
Ambient temperature	-20 °C ... 80 °C
Actuating torque	5 Nm
Product weight	900 g
Type of mounting	Either: Front panel mounting With through-hole
Pneumatic connection, port 1	G1/2
Pneumatic connection, port 2	G1/2
Pneumatic connection, port 3	G1/2
Pneumatic connection, port 4	G1/2
Note on materials	RoHS-compliant

Feature	Value
Material seals	NBR
Material housing	Die-cast aluminium
Material lever	PA