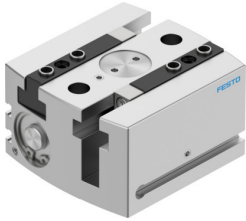


# Parallel gripper HGPL-25-20-A-B

Part number: 3361483

FESTO



[PDF](#) General operating condition

## Data sheet

| Feature   | Value  |
|---|--|
| Size  | 25   |
| Stroke per gripper jaws   | 20 mm  |
| Max. replacement accuracy                                       | <0.2 mm  |
| Max. angular gripper jaw backlash ax, ay                        | <0.2 deg   |
| Max. gripper jaw backlash Sz                                    | <0.05 mm   |
| Rotationally symmetrical  | ≤0.2 mm  |
| Repetition accuracy, gripper                                    | <0.03 mm   |
| Number of gripper jaws  | 2  |
| Drive system  | Pneumatic  |
| Mounting position   | optional   |
| Mode of operation   | Double-acting  |
| Gripper function  | Parallel   |
| Gripper force back-up   | None   |
| Design  | Twin piston<br>Guidance<br>Piston gate valve<br>T-shape<br>Rack and pinion                 |
| Position detection  | Via proximity switch   |
| Symbol  | 00991894   |
| Operating pressure  | 3 bar ... 8 bar  |
| Max. operating frequency of gripper                             | <1 Hz  |
| Min. opening time at 0.6 MPa (6 bar, 87 psi)                    | 170 ms   |
| Min. closing time at 0.6 MPa (6 bar, 87 psi)                    | 150 ms   |
| Max. mass per external gripper finger                           | 250 g  |
| Operating medium  | Compressed air to ISO 8573-1:2010 [7:4:4]  |
| Note on operating and pilot medium                              | Lubricated operation possible (in which case lubricated operation will always be required) |
| Corrosion resistance class CRC                                  | 2 - Moderate corrosion stress  |
| LABS (PWIS) conformity  | VDMA24364-B1/B2-L  |
| Ambient temperature   | 5 °C ... 60 °C   |
| Total gripping force, opening, 0.6MPa (6bar, 87 psi)            | 412 N  |
| Total gripping force, closing, 0.6MPa (6bar, 87 psi)            | 512 N  |
| Gripper force per gripper jaw, opening, 0.6 MPa (6 bar, 87 psi) | 206 N  |
| Gripper force per gripper jaw, closing, 0.6 MPa (6 bar, 87 psi) | 256 N  |
| Mass moment of inertia  | 11.98 kgcm <sup>2</sup>  |

| <b>Feature</b>                            | <b>Value</b>  |
|---|---|
| Max. force on gripper jaw Fz static       | 1500 N  |
| Max. torque at gripper Mx static          | 100 Nm  |
| Max. torque at gripper My static          | 60 Nm   |
| Max. torque at gripper Mz static          | 70 Nm   |
| Lubrication interval for guide components | 5 MioCyc  |
| Product weight                            | 1015 g  |
| Type of mounting                          | Via female thread and centring sleeve<br>Via through-hole and centring sleeve |
| Pneumatic connection                      | M5  |
| Note on materials                         | RoHS-compliant  |
| Material housing                          | Smooth-anodised wrought aluminium alloy                                       |
| Material gripper jaws                     | Hardened steel  |