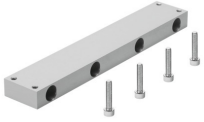


# Foot mounting HBEV-20/180

Part number: 34566

FESTO



 [General operating condition](#)

## Data sheet

Feature	Value
LABS (PWIS) conformity	VDMA24364-B1/B2-L
Suitability for the production of Li-ion batteries	Metals with more than 1% by mass of copper are excluded from use. Exceptions are printed circuit boards, cables, electrical plug connectors and coils
Material plate	Wrought aluminium alloy