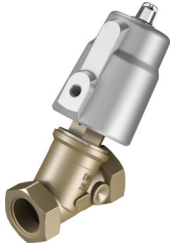


# Angle seat valve

## VZXF-L-M22C-M-B-G2-430-M1-H3ALT-80-5

FESTO

Part number: 3536436



General operating condition

### Data sheet

| Feature                               | Value   |
|---------------------------------------|---|
| Design                                | Poppet valve with piston drive  |
| Type of actuation                     | Pneumatic   |
| Sealing principle                     | Soft  |
| Mounting position                     | optional  |
| Type of mounting                      | In-line installation  |
| Line connection                       | Threaded coupling G2 to DIN ISO 228   |
| Nominal size                          | 43 mm   |
| Valve function                        | 2/2-way, closed, monostable   |
| Flow direction                        | Non-reversible  |
| Medium pressure                       | 0 MPa ... 0.5 MPa   |
| Medium pressure                       | 0 bar ... 5 bar   |
| Nominal pressure PN                   | 16  |
| Exhaust-air function                  | Without flow control option   |
| Type of reset                         | Mechanical spring   |
| Type of piloting                      | Externally controlled   |
| Pneumatic connection                  | Female thread G1/8  |
| Operating pressure                    | 0.6 MPa ... 1 MPa   |
| Operating pressure                    | 6 bar ... 10 bar  |
| Operating pressure                    | 87 psi ... 145 psi  |
| Symbol                                | 00991367  |
| Medium                                | Vapour<br>Mineral oil-based hydraulic fluid<br>Inert gases<br>Mineral oil<br>Water<br>Filtered compressed air, grade of filtration 200 µm<br>Neutral fluids |
| Direction of flow                     | Below valve seat, for gaseous and liquid media  |
| Operating medium                      | Compressed air to ISO 8573-1:2010 [7:4:4]   |
| Max. viscosity                        | 600 mm <sup>2</sup> /s  |
| Media temperature                     | -40 °C ... 200 °C   |
| Ambient temperature                   | -10 °C ... 60 °C  |
| Flow rate Kv                          | 30 m <sup>3</sup> /h  |
| Note on materials                     | RoHS-compliant  |
| LABS (PWIS) conformity                | VDMA24364 zone III  |
| Material process valve housing        | Gunmetal (red brass)  |
| Material number process valve housing | CC499K  |

| <b>Feature</b>                               | <b>Value</b>                                       |
|--|--|
| Material spindle seal                        | PTFE   |
| Material seat seal                           | PTFE   |
| Product weight                               | 2900 g   |
| CE mark (see declaration of conformity)      | In accordance with EU Pressure Equipment Directive |
| UKCA marking (see declaration of conformity) | to UK Pressure Equipment Regulations               |
| Corrosion resistance class CRC               | 0 - No corrosion stress                            |
| Material drive housing                       | Aluminium  |