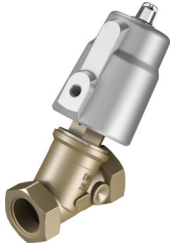


Angle seat valve VZXF-L-M22C-M-A-G112-350-H3ALV-80-V

FESTO

Part number: 3536850



[PDF](#) General operating condition

Data sheet

Feature	Value
Design	Poppet valve with piston drive
Type of actuation	Pneumatic
Sealing principle	Soft
Mounting position	optional
Type of mounting	In-line installation
Line connection	Threaded coupling G1 1/2 to DIN ISO 228
Nominal size	35 mm
Valve function	2/2-way, closed, monostable
Flow direction	Non-reversible
Medium pressure	-0.09 MPa ... 0 MPa
Medium pressure	-0.9 bar ... 0 bar
Nominal pressure PN	16
Exhaust-air function	Without flow control option
Type of reset	Mechanical spring
Type of piloting	Externally controlled
Pneumatic connection	Female thread G1/8
Operating pressure	0.6 MPa ... 1 MPa
Operating pressure	6 bar ... 10 bar
Operating pressure	87 psi ... 145 psi
Symbol	00991367
Medium	Vapour Inert gases Filtered compressed air, grade of filtration 200 µm
Direction of flow	Above valve seat, for gaseous media
Operating medium	Compressed air to ISO 8573-1:2010 [7:4:4]
Max. viscosity	600 mm ² /s
Media temperature	-10 °C ... 80 °C
Ambient temperature	-10 °C ... 60 °C
Flow rate Kv	30.5 m ³ /h
Note on materials	RoHS-compliant
LABS (PWIS) conformity	VDMA24364 zone III
Material process valve housing	Gunmetal (red brass)
Material number process valve housing	CC499K
Material spindle seal	FPM
Material seat seal	FPM
Product weight	2600 g

Feature	Value
Corrosion resistance class CRC	0 - No corrosion stress
Material drive housing	Aluminium