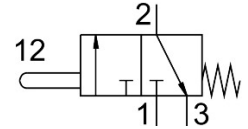


Stem actuated valve V-3-M5

Part number: 3626

FESTO



General operating condition

Data sheet

Feature	Value
Valve function	3/2-way, closed, monostable
Type of actuation	Mechanical
Standard nominal flow rate (standardised to DIN 1343)	80 l/min
pneumatic working port	M5
Operating pressure	-0.95 bar ... 8 bar
Design	Poppet seat
Nominal size	2 mm
Type of piloting	Direct
Symbol	00991095
Explosion protection	Zone 1 (ATEX) Zone 2 (ATEX) Zone 21 (ATEX) Zone 22 (ATEX)
Operating medium	Compressed air to ISO 8573-1:2010 [---]
Note on operating and pilot medium	Lubricated operation possible (in which case lubricated operation will always be required)
LABS (PWIS) conformity	VDMA24364-B1/B2-L
Ambient temperature	-10 °C ... 60 °C
Actuating force	23 N
Product weight	25 g
Type of mounting	With through-hole
Pneumatic connection, port 1	M5
Pneumatic connection, port 2	M5
Material seals	NBR
Material housing	Die-cast zinc