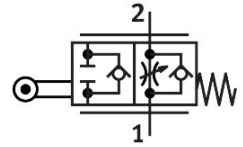



One-way flow control valve GGO-1/4-3/8

Part number: 3634

FESTO



 [General operating condition](#)

Data sheet

Feature	Value
Valve function	One-way flow control function
Pneumatic connection, port 1	G1/4
Pneumatic connection, port 2	G1/4
Type of actuation	Mechanical
Adjustment component	Roller lever
Type of mounting	With through-hole
Standard nominal flow rate in flow control direction	950 l/min
Standard nominal flow rate in blocked direction	1150 l/min
Operating pressure	0.03 bar ... 8 bar
Operating pressure	0.43 psi ... 116 psi
Ambient temperature	-10 °C ... 60 °C
Material housing	Wrought aluminium alloy
Mounting position	optional
Symbol	00991466
Operating medium	Compressed air to ISO 8573-1:2010 [7:-:-]
Note on operating and pilot medium	Lubricated operation possible (in which case lubricated operation will always be required)
LABS (PWIS) conformity	VDMA24364-B2-L
Media temperature	-10 °C ... 60 °C
Product weight	400 g
Material seals	NBR