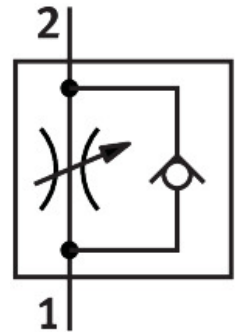


One-way flow control valve GR-1/2

Part number: 3720

FESTO



 [General operating condition](#)

Data sheet

Feature	Value
Valve function	One-way flow control function
Pneumatic connection, port 1	Female thread G1/2
Pneumatic connection, port 2	Female thread G1/2
Adjustment component	Knurled screw
Type of mounting	With through-hole
Standard nominal flow rate in flow control direction	1620 l/min
Standard nominal flow rate in blocked direction	2760 l/min
Operating pressure	0.01 MPa ... 1 MPa
Operating pressure	0.1 bar ... 10 bar
Operating pressure	1.45 psi ... 145 psi
Ambient temperature	-20 °C ... 75 °C
Material housing	Die-cast zinc
Explosion protection	The information in the certificate must be observed! Zone 1 (ATEX) Zone 2 (ATEX) Zone 21 (ATEX) Zone 22 (ATEX)
Mounting position	optional
Symbol	00991453
Operating medium	Compressed air to ISO 8573-1:2010 [7:-:-]
Note on operating and pilot medium	Lubricated operation possible (in which case lubricated operation will always be required)
LABS (PWIS) conformity	VDMA24364-B1/B2-L
Media temperature	-20 °C ... 75 °C
Product weight	517 g
Note on materials	RoHS-compliant
Material adjusting screw	Brass
Material nut	Galvanised steel