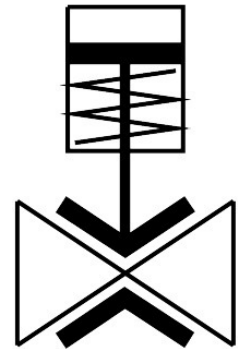


Pinch valve

VZQA-C-M22U-25-S5S5-V4V4S1-4

Part number: 3968925

FESTO



[PDF](#) [General operating condition](#)

Data sheet

| Feature | Value |
|-----------------------------|---|
| Design | Pinch valve, pneumatically actuated |
| Type of actuation | Pneumatic |
| Sealing principle | Soft |
| Mounting position | optional |
| Type of mounting | In-line installation |
| Connection Process valve | Clamp to DIN 32676 series A |
| Nominal size DN | 25 |
| Valve function | 2/2 open, monostable |
| Flow direction | Reversible |
| Medium pressure | 0 MPa ... 0.4 MPa |
| Medium pressure | 0 bar ... 4 bar |
| Medium pressure | 0 psi ... 58 psi |
| Note on the medium pressure | Use in the vacuum range was tested up to -0.09 MPa with the air at room temperature. Depending on the application, a counter-vacuum may have to be created on the control side to guarantee the media flow. |
| Operating pressure | 0.1 MPa ... 0.65 MPa |
| Operating pressure | 1 bar ... 6.5 bar |
| Operating pressure | 14.5 psi ... 94.25 psi |
| Nominal pressure PN | 10 |
| Differential pressure | 0.3 MPa |
| Differential pressure | 3 bar |
| Differential pressure | 43.5 psi |
| Burst pressure | 1.6 MPa |
| Burst pressure | 16 bar |
| Burst pressure | 232 psi |
| Overload pressure | 0.78 MPa |
| Overload pressure | 7.8 bar |
| Overload pressure | 113.1 psi |
| Type of reset | Rebound resilience |
| Type of piloting | Externally controlled |

| Feature | Value |
|--|---|
| Auxiliary pilot air port 12 | G1/8 |
| Pilot medium | Compressed air to ISO 8573-1:2010 [7:4:4] |
| Symbol | 00995245 |
| Medium | Compressed air to ISO 8573-1:2010 [-::-] |
| Max. viscosity | 4000 mm ² /s |
| Media temperature | -5 °C ... 150 °C |
| Ambient temperature | -5 °C ... 60 °C |
| Storage temperature | 5 °C ... 30 °C |
| Flow rate Kv | 18 m ³ /h |
| Switching time on | 250 ms |
| Switching time off | 250 ms |
| Note on materials | RoHS-compliant |
| LABS (PWIS) conformity | VDMA24364 zone III |
| Suitability for the production of Li-ion batteries | Suitable for battery production according to the Festo internal definition of the degree of severity F1A with restrictions regarding the use of Cu/ Zn/Ni |
| Material housing | High-alloy stainless steel |
| Material number housing | 1.4404 |
| Material housing cover | High-alloy stainless steel |
| Material seals | FPM |
| Material shut-off element | VMQ (silicone) |
| Product weight | 1474 g |
| Suitable for use with food | See declaration of conformity |
| Material bowl | PA6 |