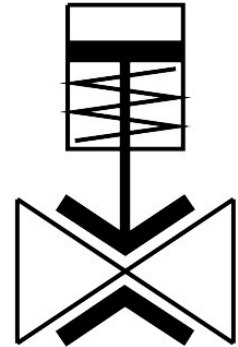


# Pinch valve

## VZQA-C-M22U-25-GG-V4V4S1-4

Part number: 3968926

FESTO



[PDF](#) [General operating condition](#)

## Data sheet

| Feature                     | Value   |
|-----------------------------|---|
| Design                      | Pinch valve, pneumatically actuated   |
| Type of actuation           | Pneumatic   |
| Sealing principle           | Soft  |
| Mounting position           | optional  |
| Type of mounting            | In-line installation  |
| Connection Process valve    | G1  |
| Nominal size DN             | 25  |
| Valve function              | 2/2 open, monostable  |
| Flow direction              | Reversible  |
| Medium pressure             | 0 MPa ... 0.4 MPa   |
| Medium pressure             | 0 bar ... 4 bar   |
| Medium pressure             | 0 psi ... 58 psi  |
| Note on the medium pressure | Use in the vacuum range was tested up to -0.09 MPa with the air at room temperature. Depending on the application, a counter-vacuum may have to be created on the control side to guarantee the media flow. |
| Operating pressure          | 0.1 MPa ... 0.65 MPa  |
| Operating pressure          | 1 bar ... 6.5 bar   |
| Operating pressure          | 14.5 psi ... 94.25 psi  |
| Nominal pressure PN         | 10  |
| Differential pressure       | 0.3 MPa   |
| Differential pressure       | 3 bar   |
| Differential pressure       | 43.5 psi  |
| Burst pressure              | 1.6 MPa   |
| Burst pressure              | 16 bar  |
| Burst pressure              | 232 psi   |
| Overload pressure           | 0.78 MPa  |
| Overload pressure           | 7.8 bar   |
| Overload pressure           | 113.1 psi   |
| Type of reset               | Rebound resilience  |
| Type of piloting            | Externally controlled   |

| Feature  | Value  |
|--|--|
| Auxiliary pilot air port 12                        | G1/8   |
| Pilot medium                                       | Compressed air to ISO 8573-1:2010 [7:4:4]  |
| Symbol   | 00995245   |
| Medium   | Compressed air to ISO 8573-1:2010 [-::-]   |
| Max. viscosity                                     | 4000 mm <sup>2</sup> /s  |
| Media temperature                                  | -5 °C ... 150 °C   |
| Ambient temperature                                | -5 °C ... 60 °C  |
| Storage temperature                                | 5 °C ... 30 °C   |
| Flow rate Kv                                       | 18 m <sup>3</sup> /h   |
| Switching time on                                  | 250 ms   |
| Switching time off                                 | 250 ms   |
| Note on materials                                  | RoHS-compliant   |
| LABS (PWIS) conformity                             | VDMA24364 zone III   |
| Suitability for the production of Li-ion batteries | Suitable for battery production according to the Festo internal definition of the degree of severity F1A with restrictions regarding the use of Cu/Zn/Ni |
| Material housing                                   | High-alloy stainless steel   |
| Material number housing                            | 1.4404   |
| Material housing cover                             | High-alloy stainless steel   |
| Material seals                                     | FPM  |
| Material shut-off element                          | VMQ (silicone)   |
| Product weight                                     | 1178 g   |
| Suitable for use with food                         | See declaration of conformity  |
| Material bowl                                      | PA6  |