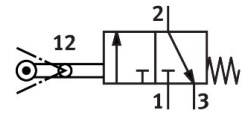


Swivel lever valve RW-3-M5

Part number: 4031

FESTO



[PDF](#) General operating condition

Data sheet

| Feature | Value |
|---|--|
| Valve function | 3/2-way, closed, monostable |
| Type of actuation | Mechanical |
| Standard nominal flow rate (standardised to DIN 1343) | 80 l/min |
| pneumatic working port | M5 |
| Operating pressure | -0.95 bar ... 8 bar |
| Design | Piston seat |
| Nominal size | 2 mm |
| Type of piloting | Direct |
| Symbol | 00991099 |
| Explosion protection | Zone 1 (ATEX) Zone 2 (ATEX) Zone 21 (ATEX) Zone 22 (ATEX) |
| Operating medium | Compressed air to ISO 8573-1:2010 [-::-] |
| Note on operating and pilot medium | Lubricated operation possible (in which case lubricated operation will always be required) |
| LABS (PWIS) conformity | VDMA24364-B1/B2-L |
| Ambient temperature | -10 °C ... 60 °C |
| Actuating force | 14.5 N |
| Type of mounting | With through-hole |
| Pneumatic connection, port 1 | M5 |
| Pneumatic connection, port 2 | M5 |
| Material seals | NBR |
| Material housing | Die-cast zinc |