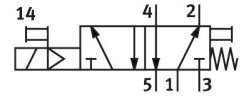
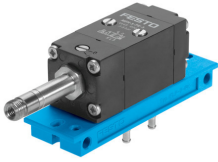


# Solenoid valve MFH-5-PK-3

Part number: 4448

FESTO



[General operating condition](#)

## Data sheet

Feature	Value
Valve function	5/2-way, monostable
Standard nominal flow rate (standardised to DIN 1343)	105 l/min
pneumatic working port	PK-3
Operating pressure	3 bar ... 8 bar
Design	Poppet seat
Nominal size	2.5 mm
Sealing principle	Soft
Symbol	00991435
Switching time off	22 ms
Switching time on	10 ms
Operating medium	Compressed air to ISO 8573-1:2010 [7::-]
LABS (PWIS) conformity	VDMA24364-B1/B2-L
Media temperature	-10 °C ... 60 °C
Ambient temperature	-5 °C ... 40 °C
Product weight	270 g
Type of mounting	Either: On sub-base On mounting frame With through-hole
Pneumatic connection, port 1	PK-3
Pneumatic connection, port 2	PK-3
Pneumatic connection, port 3	PK-3
Pneumatic connection, port 4	PK-3
Pneumatic connection, port 5	PK-3
Note on materials	RoHS-compliant
Material sub-base	Aluminium Anodised
Material seals	NBR
Material housing	Anodised