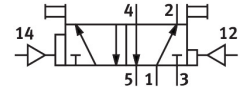
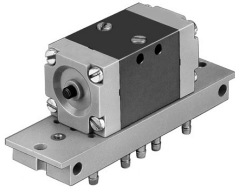


Pneumatic valve JD-5-PK-3

Part number: 4901

FESTO



[PDF](#) General operating condition

Data sheet

Feature	Value
Valve function	5/2-way, bistable, dominant
Standard nominal flow rate (standardised to DIN 1343)	105 l/min
pneumatic working port	PK-3
Operating pressure	1 bar ... 8 bar
Design	Poppet seat
Nominal size	2.5 mm
Symbol	00991011
Switching time reversal	9 ms
Switching time reversal (dominating)	25 ms
Operating medium	Compressed air to ISO 8573-1:2010 [7:-:-]
LABS (PWIS) conformity	VDMA24364-B1/B2-L
Ambient temperature	0 °C ... 60 °C
Product weight	130 g
Type of mounting	Either: On sub-base On mounting frame With through-hole
Auxiliary pilot air port 12	PK-3
Auxiliary pilot air port 14	PK-3
Pneumatic connection, port 1	PK-3
Pneumatic connection, port 2	PK-3
Pneumatic connection, port 3	PK-3
Pneumatic connection, port 4	PK-3
Pneumatic connection, port 5	PK-3
Note on materials	RoHS-compliant
Material sub-base	Brass PPS reinforced
Material seals	NBR
Material housing	Die-cast zinc