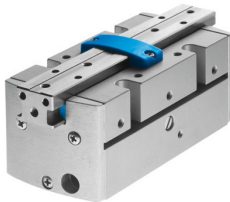


Parallel gripper HGPP-32-A

Part number: 525664

FESTO



[PDF](#) General operating condition

Data sheet

Feature	Value
Size	32
Stroke per gripper jaws	12.5 mm
Max. replacement accuracy	0.1 mm
Max. angular gripper jaw backlash ax, ay	0 deg
Max. gripper jaw backlash Sz	0 mm
Rotationally symmetrical	0.05 mm
Repetition accuracy, gripper	≤0.02 mm
Number of gripper jaws	2
Drive system	Pneumatic
Mode of operation	Double-acting
Gripper function	Parallel
Gripper force back-up	None
Design	Rack and pinion
Position detection	Via Hall sensor Via inductive sensors
Symbol	00991894
Operating pressure	2 bar ... 8 bar
Max. operating frequency of gripper	4 Hz
Min. opening time at 0.6 MPa (6 bar, 87 psi)	76 ms
Min. closing time at 0.6 MPa (6 bar, 87 psi)	110 ms
Max. mass per external gripper finger	300 g
Operating medium	Compressed air to ISO 8573-1:2010 [7:4:4]
Note on operating and pilot medium	Lubricated operation possible (in which case lubricated operation will always be required)
Corrosion resistance class CRC	2 - Moderate corrosion stress
LABS (PWIS) conformity	VDMA24364-B2-L
Ambient temperature	5 °C ... 60 °C
Total gripping force, opening, 0.6MPa (6bar, 87 psi)	830 N
Total gripping force, closing, 0.6MPa (6bar, 87 psi)	830 N
Gripper force per gripper jaw, opening, 0.6 MPa (6 bar, 87 psi)	415 N
Gripper force per gripper jaw, closing, 0.6 MPa (6 bar, 87 psi)	415 N
Mass moment of inertia	38.34 kgcm ²
Max. force on gripper jaw Fz static	720 N
Max. torque at gripper Mx static	30 Nm
Max. torque at gripper My static	30 Nm

Feature	Value
Max. torque at gripper Mz static	30 Nm
Product weight	1408 g
Type of mounting	Via female thread
Pneumatic connection	G1/8
Note on materials	RoHS-compliant
Material cover cap	POM
Material housing	Hard anodised wrought aluminium alloy
Material gripper jaws	Wrought aluminium alloy, nickel-plated