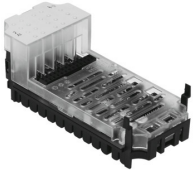


Analogue module CPX-2AE-U-I

Part number: 526168

FESTO



 General operating condition

Data sheet

Feature	Value
Dimensions (W x L x H)	50 x 107 x 50 mm
Product weight	48 g
Ambient temperature	-5 °C ... 50 °C
Storage temperature	-20 °C ... 70 °C
Degree of protection	Dependent on the manifold block
Corrosion resistance class CRC	1 - Low corrosion stress (when installed)
Max. cable length	30 m Shielded
LABS (PWIS) conformity	VDMA24364-B2-L
Material housing	PC
LED display	1 Group diagnostics
Diagnosis	Wire break per channel Limit value violation per channel Short circuit, input signal Parameterisation error
Parameterisation	Data format Forcing per channel Limit monitoring per channel Measured value smoothing Signal range per channel Behaviour after short circuit Wire break monitoring per channel
Internal cycle time	4 ms
Operational voltage range DC	18 V ... 30 V
Nominal operating voltage DC	24 V
Intern power consumption nominal operating voltage	Typ. 50 mA
Number of inputs	2
Data format	12 bits + prefix Scalable to 15 bits
Repetition accuracy	0.15% at 25°C
Basic error limit at 25 °C	+/- 0.3% for voltage inputs
Operating error limit related to the ambient temperature range	+/- 0.5% for voltage inputs
Sensor type	0 - 10 V 0 - 20 mA 4 - 20 mA
Isolation channel - channel	no
Isolation channel - internal bus	Yes, without using the internal sensor supply
Fuse protection (short circuit)	Internal electronic fuse