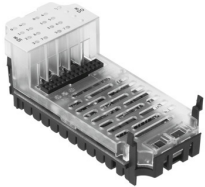


Input/output module CPX-8DE-8DA

Part number: 526257

FESTO



 General operating condition

Data sheet

| Feature | Value |
|--|---|
| Dimensions (W x L x H) | 50 x 107 x 50 mm |
| Product weight | 48 g |
| Ambient temperature | -5 °C ... 50 °C |
| Storage temperature | -20 °C ... 70 °C |
| Degree of protection | Dependent on the manifold block |
| Corrosion resistance class CRC | 1 - Low corrosion stress (when installed) |
| LABS (PWIS) conformity | VDMA24364-B2-L |
| Material housing | PC |
| LED display | 1 Group diagnostics 16 Channel status |
| Diagnosis | Short circuit/overload per channel Undervoltage of outputs |
| Number of outputs | 8 |
| Parameterisation | Input debounce time Fail-safe per channel Forcing per channel Idle mode per channel Signal extension time Behaviour after short circuit Module monitoring |
| Operational voltage range DC | 18 V ... 30 V |
| Nominal operating voltage DC | 24 V |
| Intern power consumption nominal operating voltage | Typ. 22 mA |
| Number of inputs | 8 |
| Characteristic for inputs | IEC1131-T2 |
| Input debounce time | 3 ms (0.1 ms, 10 ms, 20 ms, parameterisable) |
| Max. residual current of inputs per module | 0.7 A |
| Characteristic for outputs | IEC1131-T2 |
| Switching logic for outputs | PNP (positive switching) |
| Max. residual current outputs per module | 4 A |
| Max. power supply per channel | 0.5 A (12 W lamp load) |
| Isolation channel - channel | no |
| Isolation channel - internal bus | Outputs - yes, when using an intermediate air supply |
| Fuse protection (short circuit) | Internal electronic fuse per channel |