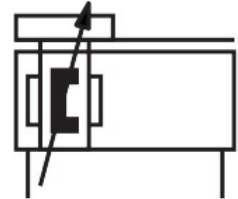
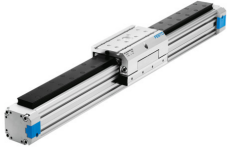


Linear drive DGPL-25-500-PPV-A-B-KF

Part number: 526651

FESTO



[PDF General operating condition](#)

Data sheet

Feature	Value
Stroke	500 mm
Piston diameter	25 mm
Cushioning	Pneumatic cushioning, adjustable at both ends Shock absorber, hard characteristic curve
Mounting position	optional
Guide	Recirculating ball bearing guide
Coupling design	Positive-locking (slot)
Position detection	Via proximity switch
Symbol	00991254
Operating pressure	0.2 MPa ... 0.8 MPa
Operating pressure	2 bar ... 8 bar
Mode of operation	Double-acting
Operating medium	Compressed air to ISO 8573-1:2010 [7:-:-]
Note on operating and pilot medium	Lubricated operation possible (in which case lubricated operation will always be required)
Corrosion resistance class CRC	0 - No corrosion stress
LABS (PWIS) conformity	VDMA24364-B1/B2-L
Ambient temperature	-10 °C ... 60 °C
Cushioning length	18 mm
Theoretical force at 0.6 MPa (6 bar, 87 psi), return stroke	295 N
Theoretical force at 0.6 MPa (6 bar, 87 psi), advance stroke	295 N
Moving mass	600 g
Moving mass for 0 mm stroke	600 g
Additional moving mass per 10 mm stroke	53 g
Basic weight for 0 mm stroke	1520 g
alternative connections	See product drawing
Pneumatic connection	G1/8
Material cover	Die-cast aluminium Coated
Material seals	NBR TPE-U(PU)
Material housing	Anodised