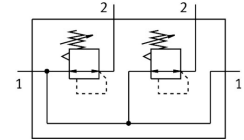



# Pressure regulating valve manifold LRB-1/4-D-O-K2-MINI

Part number: 528954

FESTO



 [General operating condition](#)

## Data sheet

| Feature   | Value   |
|---|---|
| Size  | Mini  |
| Series  | D   |
| Actuator lock   | Rotary knob with detent   |
| Mounting position                                     | optional  |
| Design  | Directly actuated diaphragm regulator<br>With through compressed air supply             |
| Controller function                                   | Output pressure constant<br>Via primary pressure compensation<br>With secondary venting |
| Symbol  | 00995331  |
| Pressure gauge (ANALOG) or Pressure display (DIGITAL) | Prepared for G1/8   |
| Operating pressure                                    | 0.1 MPa ... 1.6 MPa   |
| Operating pressure                                    | 1 bar ... 16 bar  |
| Pressure regulation range                             | 0.05 MPa ... 1.2 MPa  |
| Pressure regulation range                             | 0.5 bar ... 12 bar  |
| Pressure regulation range                             | 7.25 psi ... 174 psi  |
| Max. pressure hysteresis                              | 0.02 MPa  |
| Max. pressure hysteresis                              | 0.2 bar   |
| Max. pressure hysteresis                              | 2.9 psi   |
| Standard nominal flow rate (standardised to DIN 1343) | 1600 l/min  |
| Operating medium                                      | Compressed air to ISO 8573-1:2010 [7:4:4]   |
| LABS (PWIS) conformity                                | VDMA24364-B1/B2-L   |
| Air purity class at output                            | Compressed air to ISO 8573-1:2010 [7:4:4]   |
| Media temperature                                     | -10 °C ... 60 °C  |
| Ambient temperature                                   | -10 °C ... 60 °C  |
| Product weight  | 760 g   |
| Type of mounting                                      | With accessories  |
| Pneumatic connection, port 1                          | G1/4  |
| Pneumatic connection, port 2                          | G1/4  |
| Material sub-base                                     | Die-cast zinc   |
| Material control panel                                | PA  |
| Material seals  | NBR   |
| Material housing                                      | Die-cast zinc   |