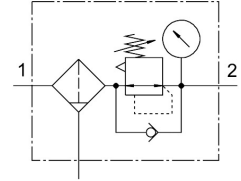


# Filter regulator MS6-LFR-3/8-D6-ERM-AS

Part number: 529220

FESTO



 General operating condition

## Data sheet

Feature	Value
Size	6
Series	MS
Actuator lock	Rotary knob with detent can be closed with accessories
Mounting position	Vertical +/-5°
Grade of filtration	40 µm
Condensate drain	Manually rotating
Design	Filter regulator with pressure gauge
Max. condensate volume	38 ml
Controller function	Output pressure constant With secondary venting
Bowl guard	Plastic bowl guard
Degree of condensate separation	>75 %
Symbol	00991589
Pressure gauge (ANALOG) or Pressure display (DIGITAL)	With pressure gauge
Operating pressure	0.08 MPa ... 2 MPa
Operating pressure	0.8 bar ... 20 bar
Pressure regulation range	0.3 bar ... 7 bar
Max. pressure hysteresis	0.025 MPa
Max. pressure hysteresis	0.25 bar
Max. pressure hysteresis	3.625 psi
Standard nominal flow rate (standardised to DIN 1343)	5700 l/min
Operating medium	Compressed air to ISO 8573-1:2010 [-:4:-] Inert gases
Corrosion resistance class CRC	2 - Moderate corrosion stress
LABS (PWIS) conformity	VDMA24364-B1/B2-L
Storage temperature	-10 °C ... 60 °C
Suitable for use with food	See supplementary material information
Air purity class at output	Compressed air to ISO 8573-1:2010 [7:4:4]
Media temperature	-10 °C ... 60 °C
Ambient temperature	-10 °C ... 60 °C
Pore size	<40 µm
Product weight	875 g

<b>Feature</b>	<b>Value</b>
Type of mounting	Either: Front panel mounting In-line installation With accessories
Pneumatic connection, port 1	G3/8
Pneumatic connection, port 2	G3/8
Note on materials	RoHS-compliant
Material control panel	PA POM
Material seals	NBR
Material filter	PE
Material housing	Die-cast aluminium
Material membrane	NBR
Material bowl	PC
Material separating plate	POM