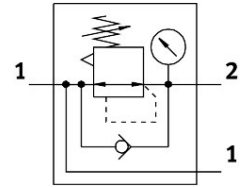


# Pressure regulator MS4-LRB-1/4-D5-AS-BD

Part number: 529474

FESTO



[PDF General operating condition](#)

## Data sheet

| Feature   | Value   |
|---|---|
| Size  | 4   |
| Series  | MS  |
| Actuator lock   | Rotary knob with detent<br>can be closed with accessories                                     |
| Mounting position                                     | optional  |
| Design  | Directly actuated diaphragm regulator<br>With through compressed air supply                   |
| Controller function                                   | Output pressure constant<br>With secondary venting<br>With return flow function               |
| Symbol  | 00995251  |
| Pressure gauge (ANALOG) or Pressure display (DIGITAL) | With pressure gauge   |
| Operating pressure                                    | 0.8 bar ... 14 bar  |
| Pressure regulation range                             | 0.3 bar ... 4 bar   |
| Max. pressure hysteresis                              | 0.25 bar  |
| Standard nominal flow rate (standardised to DIN 1343) | 650 l/min   |
| Operating medium                                      | Compressed air to ISO 8573-1:2010 [7:4:4]<br>Inert gases                                      |
| Note on operating and pilot medium                    | Lubricated operation possible (in which case lubricated operation will<br>always be required) |
| Corrosion resistance class CRC                        | 2 - Moderate corrosion stress   |
| LABS (PWIS) conformity                                | VDMA24364-B1/B2-L   |
| Storage temperature                                   | -10 °C ... 60 °C  |
| Suitable for use with food                            | See supplementary material information  |
| Media temperature                                     | -10 °C ... 60 °C  |
| Ambient temperature                                   | -10 °C ... 60 °C  |
| Product weight  | 222 g   |
| Type of mounting                                      | Either:<br>Front panel mounting<br>In-line installation<br>With accessories                   |
| Pneumatic connection, port 1                          | G1/4  |
| Pneumatic connection, port 2                          | QS-8  |
| Note on materials                                     | RoHS-compliant  |
| Material sub-base                                     | Die-cast aluminium  |
| Material control panel                                | PA<br>POM   |

| <b>Feature</b>    | <b>Value</b>       |
|-------------------|--------------------|
| Material seals    | NBR                |
| Material housing  | Die-cast aluminium |
| Material membrane | NBR                |