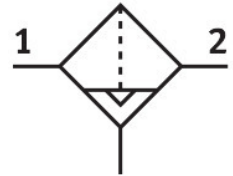


Fine filter MS6-LFM-1/2-BUV

Part number: 529661

FESTO



 General operating condition

Data sheet

Feature	Value
Series	MS
Size	6
Design	Fibre filter
Grade of filtration	1 µm
Condensate drain	Fully automatic Manual, non-detenting
Symbol	00991520
Operating pressure	0.2 MPa ... 1.2 MPa
Operating pressure	2 bar ... 12 bar
Operating pressure	29 psi ... 174 psi
Operating medium	Compressed air to ISO 8573-1:2010 [6:-:4] Inert gases
Air purity class at output	Compressed air to ISO 8573-1:2010:[5:-:3]
Max. standard flow rate for clean air class	950 l/min
Min. standard flow rate for clean air class	140 l/min
Filter efficiency	99.99 %
Max. condensate volume	38 ml
Bowl guard	Integrated as metal bowl
Corrosion resistance class CRC	2 - Moderate corrosion stress
LABS (PWIS) conformity	VDMA24364-B1/B2-L
Suitable for use with food	See supplementary material information
Media temperature	-10 °C ... 60 °C
Ambient temperature	-10 °C ... 60 °C
Storage temperature	-10 °C ... 60 °C
Filter efficiency, fine particles	99 %
Residual oil content	0.5 mg/m ³
Filter efficiency, oil aerosol	90 %
Type of mounting	Either: In-line installation With accessories
Mounting position	Vertical +/-5°
Pneumatic connection, port 1	G1/2
Pneumatic connection, port 2	G1/2
Material housing	Die-cast aluminium
Material filter	Borosilicate fibre

Feature	Value
Material bowl	Wrought aluminium alloy
Material seals	NBR
Note on materials	RoHS-compliant
Product weight	820 g