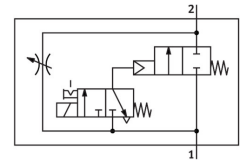


# Soft start valve MS6-DE-1/2-V230

Part number: 529801

FESTO



 General operating condition

## Data sheet

| Feature   | Value  |
|---|--|
| Type of actuation                                     | Electric   |
| Mounting position                                     | optional   |
| Manual override                                       | Detenting<br>Non-detenting   |
| Design  | Piston seat  |
| Type of reset   | Mechanical spring  |
| Type of piloting                                      | Pilot actuated   |
| Pilot air supply                                      | Internal   |
| Flow direction  | Non-reversible   |
| Symbol  | 00991501   |
| Valve function  | 2/2  |
| Switching position indicator                          | With accessories   |
| Operating pressure                                    | 4 bar ... 18 bar   |
| b value   | 0.39   |
| C value   | 28.97 l/sbar   |
| Standard nominal flow rate (standardised to DIN 1343) | 6450 l/min   |
| Duty cycle  | 100%   |
| Characteristic coil data                              | 230 V AC: 50/60 Hz, pick-up power 3.0 VA, holding power 2.4 VA                             |
| Approval  | c UL - Recognized (OL)   |
| Operating medium                                      | Compressed air to ISO 8573-1:2010 [7:4:4]<br>Inert gases                                   |
| Note on operating and pilot medium                    | Lubricated operation possible (in which case lubricated operation will always be required) |
| Corrosion resistance class CRC                        | 2 - Moderate corrosion stress  |
| LABS (PWIS) conformity                                | VDMA24364-B1/B2-L  |
| Suitable for use with food                            | See supplementary material information   |
| Media temperature                                     | -10 °C ... 60 °C   |
| Degree of protection                                  | IP65   |
| Ambient temperature                                   | -10 °C ... 60 °C   |
| Product weight  | 680 g  |
| Electrical connection                                 | Type C<br>Plugs<br>To DIN EN 175301-803<br>Square design                                   |
| Signal status display                                 | With accessories   |

| Feature                      | Value   |
|------------------------------|---|
| Type of mounting             | Either:<br>In-line installation<br>With accessories |
| Pneumatic connection, port 1 | G1/2  |
| Pneumatic connection, port 2 | G1/2  |
| Note on materials            | RoHS-compliant                                      |
| Material seals               | NBR   |
| Material housing             | Die-cast aluminium                                  |