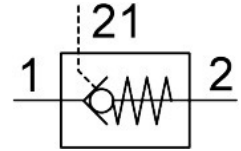


Piloted check valve HGL-M5-B

Part number: 530029

FESTO



 General operating condition

Data sheet

Feature	Value
Valve function	Piloted non-return function
Pneumatic connection, port 1	M5
Pneumatic connection, port 2	M5
Pilot air port 21	M5
Type of actuation	Pneumatic
Type of mounting	Screw-in Via male thread
Operating pressure	0.05 MPa ... 1 MPa
Operating pressure	0.5 bar ... 10 bar
Pilot pressure	0.2 MPa ... 1 MPa
Pilot pressure	2 bar ... 10 bar
Pilot pressure	29 psi ... 145 psi
Ambient temperature	-10 °C ... 60 °C
Operating medium	Compressed air to ISO 8573-1:2010 [7:4:4]
Maritime classification	See certificate
Mounting position	optional
Symbol	00991456
Standard flow rate 1->2 (6-0)	200 l/min
Standard nominal flow rate 1->2 (6-5)	130 l/min
Note on operating and pilot medium	Lubricated operation possible (in which case lubricated operation will always be required)
Corrosion resistance class CRC	2 - Moderate corrosion stress
LABS (PWIS) conformity	VDMA24364-B2-L
Cleanroom class	Class 4 according to ISO 14644-1
Storage temperature	-10 °C ... 60 °C
Media temperature	-10 °C ... 60 °C
Pilot medium	Compressed air to ISO 8573-1:2010 [7:4:4]
Nominal torque	1.25 Nm
Tolerance for nominal tightening torque	± 10%
Product weight	21 g
Note on materials	RoHS-compliant
Material seals	NBR
Material hollow bolt	Wrought aluminium alloy Anodised
Material release ring	POM
Material non-return collar	NBR

Feature	Value
Material swivel fitting	Die-cast zinc