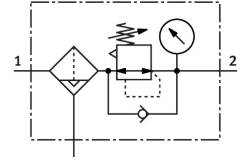


Filter regulator MS6-LFR-1/2-D7-CUV-AS

Part number: 530340

FESTO



General operating condition

Data sheet

| Feature | Value |
|---|---|
| Size | 6 |
| Series | MS |
| Actuator lock | Rotary knob with detent can be closed with accessories |
| Mounting position | Vertical +/- 5° |
| Grade of filtration | 5 µm |
| Condensate drain | Fully automatic Manual, non-detenting |
| Design | Filter regulator with pressure gauge |
| Max. condensate volume | 38 ml |
| Controller function | Output pressure constant With secondary venting |
| Bowl guard | Integrated as metal bowl |
| Degree of condensate separation | >75 % |
| Symbol | 00991587 |
| Pressure gauge (ANALOG) or Pressure display (DIGITAL) | With pressure gauge |
| Operating pressure | 0.2 MPa ... 1.2 MPa |
| Operating pressure | 2 bar ... 12 bar |
| Pressure regulation range | 0.5 bar ... 12 bar |
| Max. pressure hysteresis | 0.025 MPa |
| Max. pressure hysteresis | 0.25 bar |
| Max. pressure hysteresis | 3.625 psi |
| Standard nominal flow rate (standardised to DIN 1343) | 4000 l/min |
| Operating medium | Compressed air to ISO 8573-1:2010 [7:4:-] Inert gases |
| Corrosion resistance class CRC | 2 - Moderate corrosion stress |
| LABS (PWIS) conformity | VDMA24364-B1/B2-L |
| Storage temperature | -10 °C ... 60 °C |
| Suitable for use with food | See supplementary material information |
| Air purity class at output | Compressed air to ISO 8573-1:2010 [6:4:4] |
| Media temperature | -10 °C ... 60 °C |
| Ambient temperature | -10 °C ... 60 °C |
| Pore size | <5 µm |
| Product weight | 1087 g |

| Feature | Value |
|------------------------------|---|
| Type of mounting | Either: Front panel mounting In-line installation With accessories |
| Pneumatic connection, port 1 | G1/2 |
| Pneumatic connection, port 2 | G1/2 |
| Note on materials | RoHS-compliant |
| Material control panel | PA POM |
| Material seals | NBR |
| Material filter | PE |
| Material housing | Die-cast aluminium |
| Material membrane | NBR |
| Material bowl | Wrought aluminium alloy |
| Material separating plate | POM |