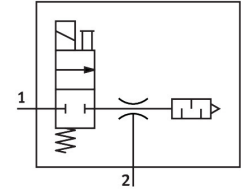
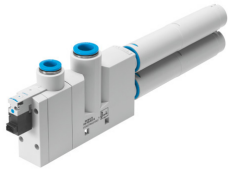


Vacuum generator VN-20-H-T6-PQ4-VQ5-RO2-M

Part number: 532656

FESTO



[General operating condition](#)

Data sheet

| Feature | Value |
|--|---|
| Nominal size, Laval nozzle | 2 mm |
| Grid dimension | 24 mm |
| Silencer design | Open |
| Mounting position | optional |
| Ejector characteristic | Standard High negative pressure |
| Manual override | Non-detenting |
| Integrated function | Electric on-off valve Open silencer |
| Design | T-shape |
| Symbol | 00991492 |
| Valve function | 2/2 |
| Operating pressure for max. suction flow rate | 2 bar |
| Operating pressure | 2 bar ... 8 bar |
| Operating pressure for max. vacuum | 3.5 bar |
| Max. vacuum | 92 % |
| Nominal operating pressure | 6 bar |
| Max. suction flow rate against atmosphere | 98 l/min |
| Air supply time at nominal operating pressure | 0.24 s |
| Operational voltage range DC | 21.6 V ... 26.4 V |
| Electrical power consumption | 1.2 W |
| Duty cycle | 100% |
| Operating medium | Compressed air to ISO 8573-1:2010 [7:4:4] |
| Note on operating and pilot medium | Lubricated operation not possible |
| Corrosion resistance class CRC | 1 - Low corrosion stress |
| LABS (PWIS) conformity | VDMA24364 zone III |
| Media temperature | 0 °C ... 50 °C |
| Sound pressure level at nominal operating pressure | 63 dB(A) |
| Degree of protection | IP40 |
| Ambient temperature | 0 °C ... 50 °C |
| Product weight | 215 g |
| Electrical connection | Plugs |
| Type of mounting | With through-hole With accessories |
| Pneumatic connection, port 1 | QS-10 |

| Feature | Value |
|------------------------------|---|
| Pneumatic connection, port 3 | Open silencer |
| Vacuum connection | QS-12 |
| Material connecting thread | Anodised wrought aluminium alloy |
| Note on materials | RoHS-compliant |
| Material seals | NBR |
| Material receiver nozzle | POM |
| Material housing | POM-reinforced |
| Material silencer | Wrought aluminium alloy POM PU foam |
| Material screws | Steel |
| Material transmitter nozzle | Wrought aluminium alloy |
| Material fitting | Brass Nickel-plated |