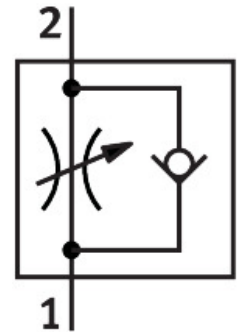


One-way flow control valve GRLA-1/4-QS-8-RS-D

Part number: 534339

FESTO



 [General operating condition](#)

Data sheet

| Feature | Value |
|---|--|
| Valve function | One-way flow control function |
| Pneumatic connection, port 1 | QS-8 |
| Pneumatic connection, port 2 | G1/4 |
| Adjustment component | Knurled screw |
| Type of mounting | Screw-in Via male thread |
| Standard nominal flow rate in flow control direction | 475 l/min |
| Standard nominal flow rate in blocked direction | 325 l/min ... 500 l/min |
| Operating pressure | 0.2 bar ... 10 bar |
| Ambient temperature | -10 °C ... 60 °C |
| Maritime classification | See certificate |
| Mounting position | optional |
| Symbol | 00991452 |
| Operating pressure complete temperature range | 0.2 bar ... 10 bar |
| Standard flow rate in flow control direction 0.6->0 MPa (6->0 bar, 87->0 psi) | 720 l/min |
| Standard flow rate in non-return direction 0.6->0 MPa (6->0 bar, 87->0 psi) | 610 l/min ... 760 l/min |
| Operating medium | Compressed air to ISO 8573-1:2010 [7:4:4] |
| Note on operating and pilot medium | Lubricated operation possible (in which case lubricated operation will always be required) |
| LABS (PWIS) conformity | VDMA24364-B1/B2-L |
| Cleanroom class | Class 4 according to ISO 14644-1 |
| Storage temperature | -10 °C ... 40 °C |
| Media temperature | -10 °C ... 60 °C |
| Nominal torque | 5 Nm |
| Product weight | 50 g |
| Note on materials | RoHS-compliant |
| Material seals | NBR |
| Material hollow bolt | Wrought aluminium alloy Anodised |

| Feature | Value |
|--------------------------|-------------------------------------|
| Material release ring | POM |
| Material knurled head | Wrought aluminium alloy Anodised |
| Material adjusting screw | High-alloy stainless steel |
| Material swivel fitting | Die-cast zinc |