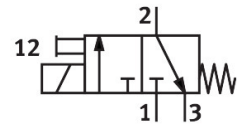
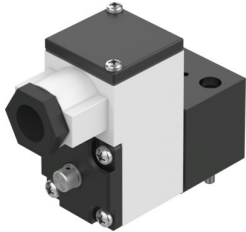


# Pilot valve MGXIAH-3/2-0.8-24DC-EX

Part number: 535614

FESTO



[General operating condition](#)

## Data sheet

| Feature   | Value   |
|---|---|
| Valve function                                    | 3/2-way, closed, monostable   |
| Type of actuation                                 | Electric  |
| Operating pressure                                | -0.09 MPa ... 0.8 MPa   |
| Operating pressure                                | -0.9 bar ... 8 bar  |
| Operating pressure                                | -13.05 psi ... 116 psi  |
| Design  | On/off valve  |
| Type of reset                                     | Mechanical spring   |
| CE mark (see declaration of conformity)           | To EU Explosion Protection Directive (ATEX)   |
| Explosion protection certification outside the EU | EPL Da (CN)<br>EPL Da (IECEX)<br>EPL Ga (CN)<br>EPL Ga (IEC-EX)   |
| Certificate issuing authority                     | ATEX: CML 17 ATEX 2046X<br>CCC-Ex: 2020322307001726<br>IEC: IECEX CML 17.0030X                                |
| ATEX category gas                                 | II 1G   |
| ATEX category dust                                | II 1D   |
| Explosion ignition protection type for gas        | Ex ia IIC T6...T5 Gb  |
| Explosion ignition protection type for dust       | Ex ia IIIC T135°C Db  |
| Explosion ambient temperature                     | -40 °C ≤ Ta ≤ 50 °C / 65 °C   |
| Degree of protection                              | IP65  |
| Manual override                                   | Detenting   |
| Flow direction                                    | Non-reversible  |
| Symbol  | 00991308  |
| Duty cycle  | 100%  |
| Insulation material class                         | H   |
| Max. input power Pi                               | -40°C ~ +50°C T6 = 2.98W<br>-40°C ~ +65°C T135°C = 2.98W<br>-40°C ~ +65°C T5 = 2.98W<br>-40°C ~ +65°C T6 = 1W |
| Max. input voltage Ui                             | 31 V  |
| Max. input current Ii                             | 0.67 A  |
| Characteristic coil data                          | 24 V DC: 1.5 W  |
| Effective internal inductivity Li                 | Negligibly low  |
| Effective internal capacitance Ci                 | Negligibly low  |
| Permissible frequency fluctuations                | +/- 10%   |

| <b>Feature</b>                     | <b>Value</b>  |
|------------------------------------|---|
| Explosion protection               | Zone 0 (ATEX)<br>Zone 0 (CN)<br>Zone 0 (IEC-EX)<br>Zone 1 (ATEX)<br>Zone 2 (ATEX)<br>Zone 20 (ATEX)<br>Zone 20 (CN)<br>Zone 20 (IEC-EX)<br>Zone 21 (ATEX)<br>Zone 22 (ATEX) |
| Operating medium                   | Compressed air to ISO 8573-1:2010 [7:4:4]   |
| Note on operating and pilot medium | Lubricated operation possible (in which case lubricated operation will always be required)  |
| Corrosion resistance class CRC     | 2 - Moderate corrosion stress   |
| LABS (PWIS) conformity             | VDMA24364 zone III  |
| Ambient temperature                | -20 °C ... 80 °C  |
| Type of mounting                   | CNOMO   |
| Note on materials                  | RoHS-compliant  |