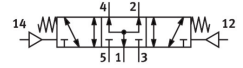


# Pneumatic valve VL-5/3B-D-3-C-EX

Part number: 536027

FESTO



[General operating condition](#)

## Data sheet

Feature	Value
Valve function	5/3-way, pressurised
Type of actuation	Pneumatic
Construction width	65 mm
Standard nominal flow rate (standardised to DIN 1343)	4100 l/min
pneumatic working port	Sub-base size 3 to ISO 5599-1 G1/2
Operating pressure	-0.09 MPa ... 1.6 MPa
Operating pressure	-0.9 bar ... 16 bar
Design	Piston gate valve
Type of reset	Mechanical spring
CE mark (see declaration of conformity)	To EU Explosion Protection Directive (ATEX)
UKCA marking (see declaration of conformity)	To UK EX instructions
ATEX category gas	II 2G
ATEX category dust	II 2D
Explosion ignition protection type for gas	Ex h IIC T4 Gb
Explosion ignition protection type for dust	Ex h IIIC T130°C Db
Explosion ambient temperature	-10 °C ≤ Ta ≤ +60 °C
Explosion protection certification outside the EU	EPL Db (GB) EPL Gb (GB)
Nominal size	14.5 mm
Grid dimension	71 mm
Exhaust-air function	With flow control option
Sealing principle	Soft
Mounting position	optional
Conforms to standard	ISO 5599-1
Manual override	None
ISO code	307
Type of piloting	Direct
Flow direction	Reversible
Symbol	00991022
lap	Overlap
Pilot pressure	3 bar ... 16 bar
Switching time off	60 ms
Switching time on	16 ms

Feature	Value
Explosion protection	Zone 1 (ATEX) Zone 1 (UKEX) Zone 2 (ATEX) Zone 21 (ATEX) Zone 21 (UKEX) Zone 22 (ATEX)
Operating medium	Compressed air to ISO 8573-1:2010 [7:4:4]
Note on operating and pilot medium	Lubricated operation possible (in which case lubricated operation will always be required)
Vibration resistance	Transport application test with severity level 1 to FN 942017-4 and EN 60068-2-6
Shock resistance	Shock test with severity level 2 to FN 942017-5 and EN 60068-2-27
LABS (PWIS) conformity	VDMA24364-B1/B2-L
Media temperature	-10 °C ... 60 °C
Sound pressure level	85 dB(A)
Pilot medium	Compressed air to ISO 8573-1:2010 [7:4:4]
Ambient temperature	-10 °C ... 60 °C
Product weight	910 g
Type of mounting	On sub-base Via through-hole and screw
Pilot air port 12	Sub-base size 3 to ISO 5599-1
Pilot air port 14	Sub-base size 3 to ISO 5599-1
Pneumatic connection, port 1	Sub-base size 3 to ISO 5599-1
Pneumatic connection, port 2	Sub-base size 3 to ISO 5599-1
Pneumatic connection, port 3	Sub-base size 3 to ISO 5599-1
Pneumatic connection, port 4	Sub-base size 3 to ISO 5599-1
Pneumatic connection, port 5	Sub-base size 3 to ISO 5599-1
Note on materials	RoHS-compliant
Material seals	HNBR NBR
Material housing	Die-cast aluminium