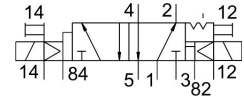
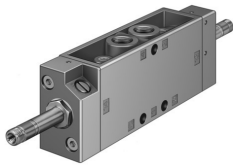


Solenoid valve JMFDH-5-1/8-EX

Part number: 536193

FESTO



[General operating condition](#)

Data sheet

Feature	Value
Valve function	5/2-way, bistable, dominant
Type of actuation	Electric
Construction width	26 mm
Standard nominal flow rate (standardised to DIN 1343)	600 l/min
pneumatic working port	G1/8
Operating voltage	Via solenoid coil, must be ordered separately
Operating pressure	0.25 MPa ... 0.8 MPa
Operating pressure	2.5 bar ... 8 bar
Design	Poppet seat
CE mark (see declaration of conformity)	To EU Explosion Protection Directive (ATEX)
Explosion protection certification outside the EU	EPL Db (GB) EPL Gb (GB)
UKCA marking (see declaration of conformity)	To UK EX instructions
ATEX category gas	II 2G
ATEX category dust	II 2D
Explosion ignition protection type for gas	Ex h IIC T4 Gb
Explosion ignition protection type for dust	Ex h IIIC T130°C Db
Explosion ambient temperature	-5 °C ≤ Ta ≤ +40 °C
Degree of protection	IP65
Nominal size	5 mm
Grid dimension	27 mm
Exhaust-air function	With flow control option
Sealing principle	Soft
Mounting position	optional
Manual override	Detenting
Type of piloting	Pilot actuated
Flow direction	Non-reversible
Symbol	00995763
lap	Underlap
Max. switching frequency	16 Hz
Switching time reversal	16 ms
Max. positive test pulse with 0 signal	2200 µs
Max. negative test pulse with 1 signal	3700 µs
Characteristic coil data	See solenoid coil, to be ordered separately

Feature	Value
Explosion protection	Zone 1 (ATEX) Zone 1 (UKEX) Zone 2 (ATEX) Zone 21 (ATEX) Zone 21 (UKEX) Zone 22 (ATEX)
Operating medium	Compressed air to ISO 8573-1:2010 [7:4:4]
Note on operating and pilot medium	Lubricated operation possible (in which case lubricated operation will always be required)
Corrosion resistance class CRC	1 - Low corrosion stress
LABS (PWIS) conformity	VDMA24364-B1/B2-L
Storage temperature	-20 °C ... 60 °C
Media temperature	-5 °C ... 40 °C
Ambient temperature	-5 °C ... 40 °C
Product weight	260 g
Electrical connection	Via F coil, to be ordered separately
Type of mounting	Either: On manifold rail With through-hole
Breather connection	M5
Pilot exhaust port 82	M5
Pilot exhaust port 84	M5
Pneumatic connection, port 1	G1/8
Pneumatic connection, port 2	G1/8
Pneumatic connection, port 3	G1/8
Pneumatic connection, port 4	G1/8
Pneumatic connection, port 5	G1/8
Note on materials	RoHS-compliant
Material seals	NBR TPE-U(PU)
Material housing	Die-cast aluminium