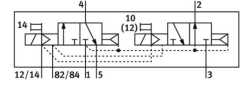
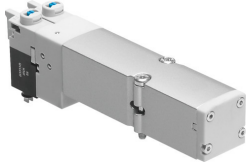


# Solenoid valve VMPA2-M1H-H-PI

Part number: 537959

FESTO



 General operating condition

## Data sheet

| Feature   | Value  |
|---|--|
| Valve function  | 2x3/2-way, open/closed, monostable   |
| Type of actuation                                     | Electric   |
| Valve size  | 20 mm  |
| Standard nominal flow rate (standardised to DIN 1343) | 550 l/min  |
| Operating voltage                                     | 24V DC   |
| Operating pressure                                    | 0.3 MPa ... 1 MPa  |
| Operating pressure                                    | 3 bar ... 10 bar   |
| Design  | Piston gate valve  |
| Type of reset   | Pneumatic spring   |
| Approval  | c UL us - Recognized (OL)  |
| Degree of protection                                  | IP65<br>To IEC 60529   |
| Sealing principle                                     | Soft   |
| Mounting position                                     | optional   |
| Manual override                                       | Detenting<br>Non-detenting   |
| Type of piloting                                      | Pilot actuated   |
| Flow direction  | Non-reversible   |
| Symbol  | 00991813   |
| lap   | Overlap  |
| Signal status display                                 | yes  |
| Pilot pressure  | 0.3 MPa ... 0.8 MPa  |
| Pilot pressure  | 3 bar ... 8 bar  |
| Suitability for vacuum                                | no   |
| Standard nominal flow rate with QS-8                  | 550 l/min  |
| Standard nominal flow rate with QS-10                 | 550 l/min  |
| Switching time off                                    | 28 ms  |
| Switching time on                                     | 8 ms   |
| Max. positive test pulse with 0 signal                | 400 µs   |
| Max. negative test pulse with 1 signal                | 900 µs   |
| Permissible voltage fluctuations                      | +/- 25%  |
| Operating medium                                      | Compressed air to ISO 8573-1:2010 [7:4:4]  |
| Note on operating and pilot medium                    | Lubricated operation possible (in which case lubricated operation will always be required) |
| Vibration resistance                                  | Transport application test with severity level 2 to FN 942017-4 and EN 60068-2-6           |
| Shock resistance                                      | Shock test with severity level 2 to FN 942017-5 and EN 60068-2-27                          |

| <b>Feature</b>                            | <b>Value</b>             |
|---|--------------------------|
| Corrosion resistance class CRC            | 1 - Low corrosion stress |
| LABS (PWIS) conformity                    | VDMA24364-B1/B2-L        |
| Storage temperature                       | -20 °C ... 40 °C         |
| Media temperature                         | -5 °C ... 50 °C          |
| Relative air humidity                     | Max. 90% at 40°C         |
| Ambient temperature                       | -5 °C ... 50 °C          |
| Max. tightening torque for valve mounting | 0.65 Nm                  |
| Product weight                            | 100 g                    |
| Type of mounting                          | With through-hole        |
| Note on materials                         | RoHS-compliant           |
| Material seals                            | NBR                      |
| Material housing                          | Die-cast aluminium       |